

Clinton Twp

Interstate

County

US/State

Local

Rail Roads

Lakes

Streams

Parcels

Highlands Planning Area

Highlands Preservation Area

Clinton Township

Natural Resources Inventory

Highlands Boundary

Highlands Planning Area
Total
97%

Highlands Preservation Area
Total
3%

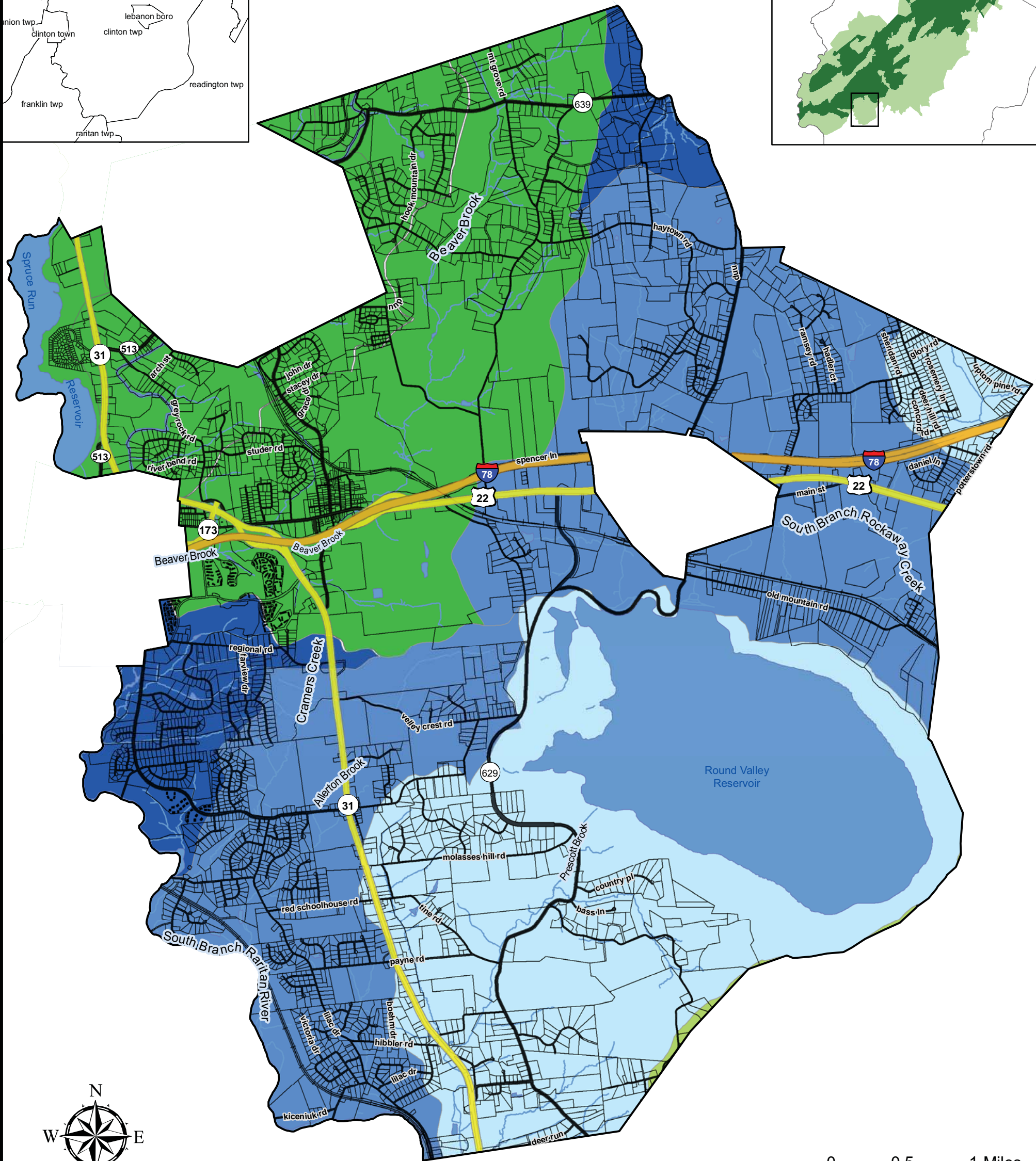
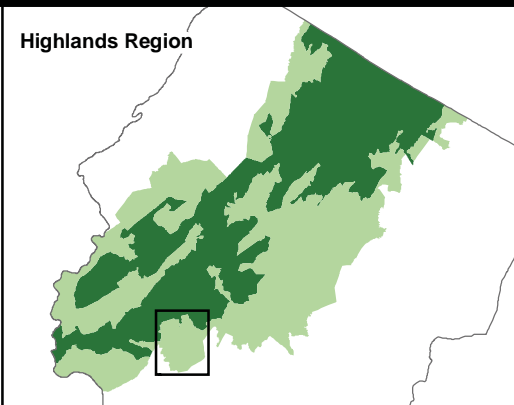
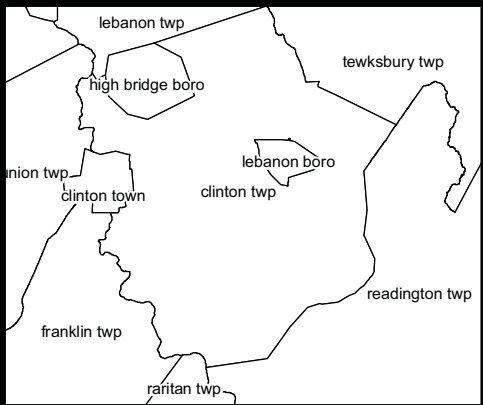
Upper Raritan Watershed Association
GIS Department
11-20-2007
Scale: 1:44,000

Source:
Highlands Boundary, Streams - Highlands Council
Parcels - (2004) Hunterdon County
Roads, Rails Roads, Lakes
and Municipal Boundary - Downloads
from Hunterdon County 1/2/2007

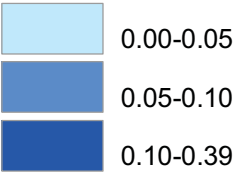
Disclaimer: This information is provided with the understanding that it is not guaranteed to be correct or complete, and conclusions drawn from such information are the sole responsibility of the user.

Produced by Upper Raritan Watershed Association

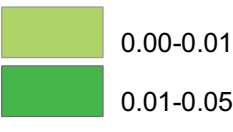
Clinton Township Natural Resources Inventory ~ 27



Net Water Availability (Unconditional) by HUC14
Million Gallons Per Day (MGD)



Net Water Availability (Conditional) by HUC14
Million Gallons Per Day (MGD)



- Clinton Twp
- Interstate
- County
- US/State
- Local
- Rail Roads
- Parcels
- Lakes
- Streams

Clinton Township

Natural Resources Inventory Land Use Capability Water Availability Map (Map 2 of 5)

The Highlands Council determined the net water availability for each subwatershed in the Highlands Region. The net water availability analysis was performed at a HUC14 subwatershed level to determine three important components:

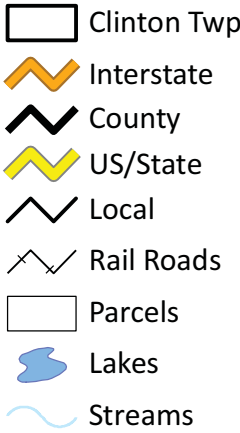
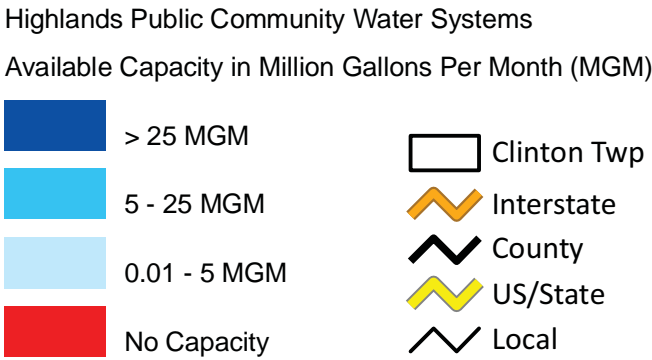
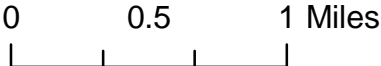
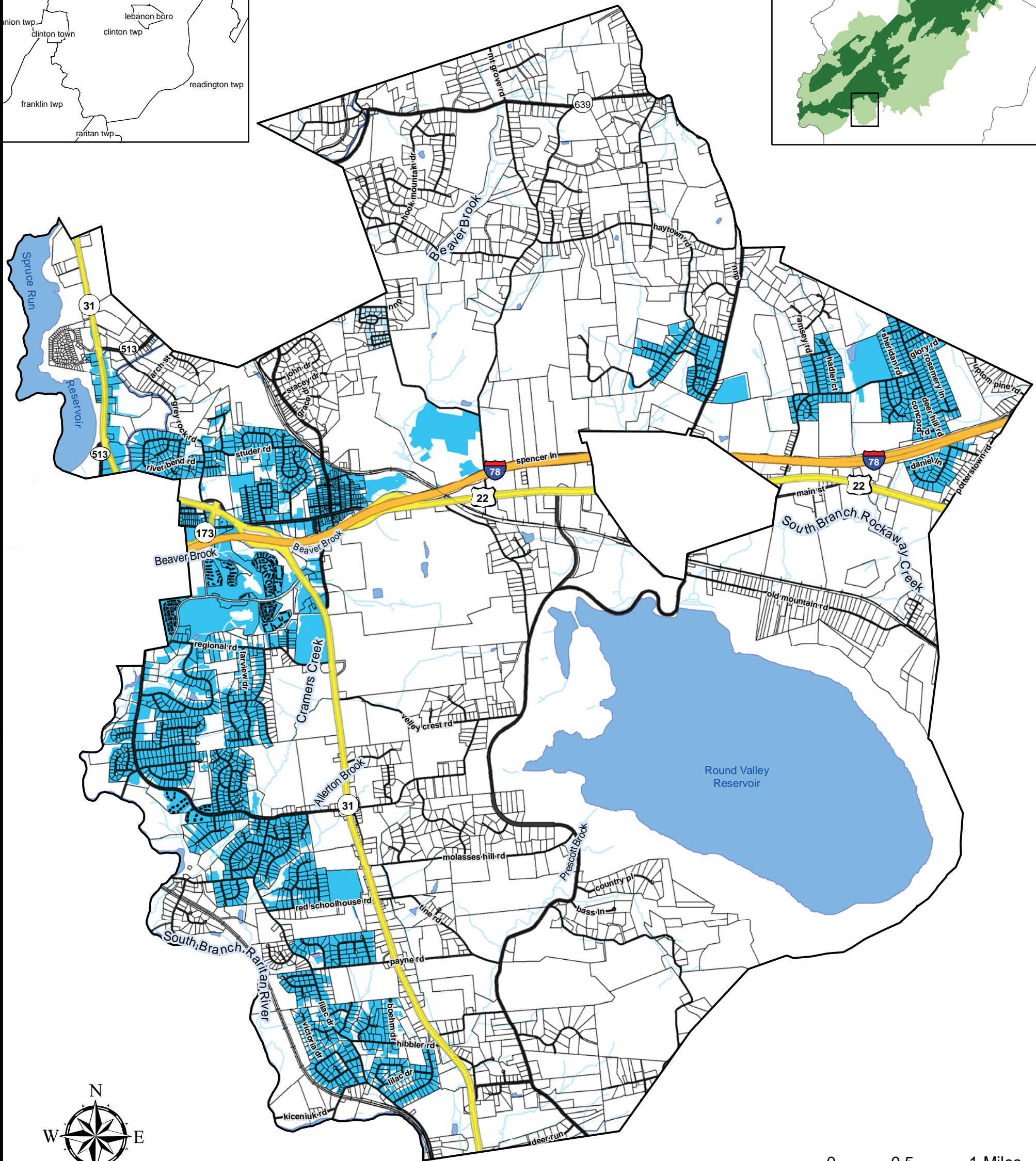
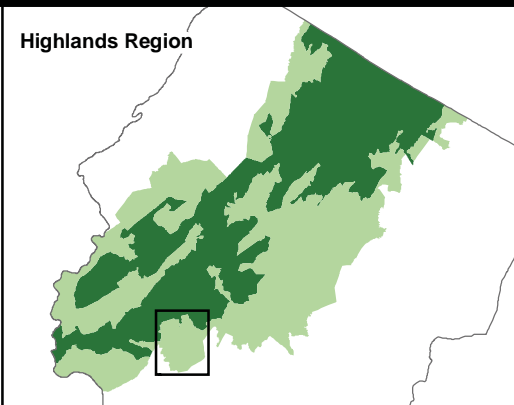
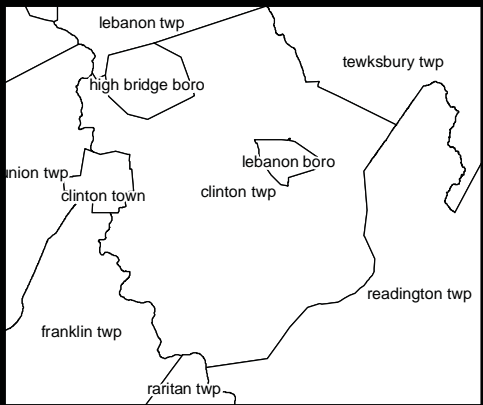
1. the sustainability of water resources (ground water capacity);
2. the water that is "available" for human use (ground water availability); and
3. the remaining water after current consumptive and depletive uses are deducted (net water availability).

Calculations used for net water availability - Highlands technical report Calculation of Net Water Availability (pg. 28)



Upper Raritan Watershed Association
GIS Department
1-7-2008
Scale: 1:44,000
Source:
Highlands LUCM - 12/2007 Highlands Council
Streams - Highlands Council
Parcels - (2004) Hunterdon County
Roads, Rails Roads, Lakes
and Municipal Boundary - Downloads
from Hunterdon County 1/2/2007

Disclaimer: This information is provided with the understanding that it is not guaranteed to be correct or complete, and conclusions drawn from such information are the sole responsibility of the user.



Clinton Township

Natural Resources Inventory

Land Use Capability

Public Community Water Systems Map

(Map 3 of 5)

This Map provides an overview of the areas of the Highlands Region that are currently served by the public community water systems and their estimated net capacity. Demands were not apportioned between Highlands and non-Highlands Region, because accurate service areas were not available for the non-Highlands portions.

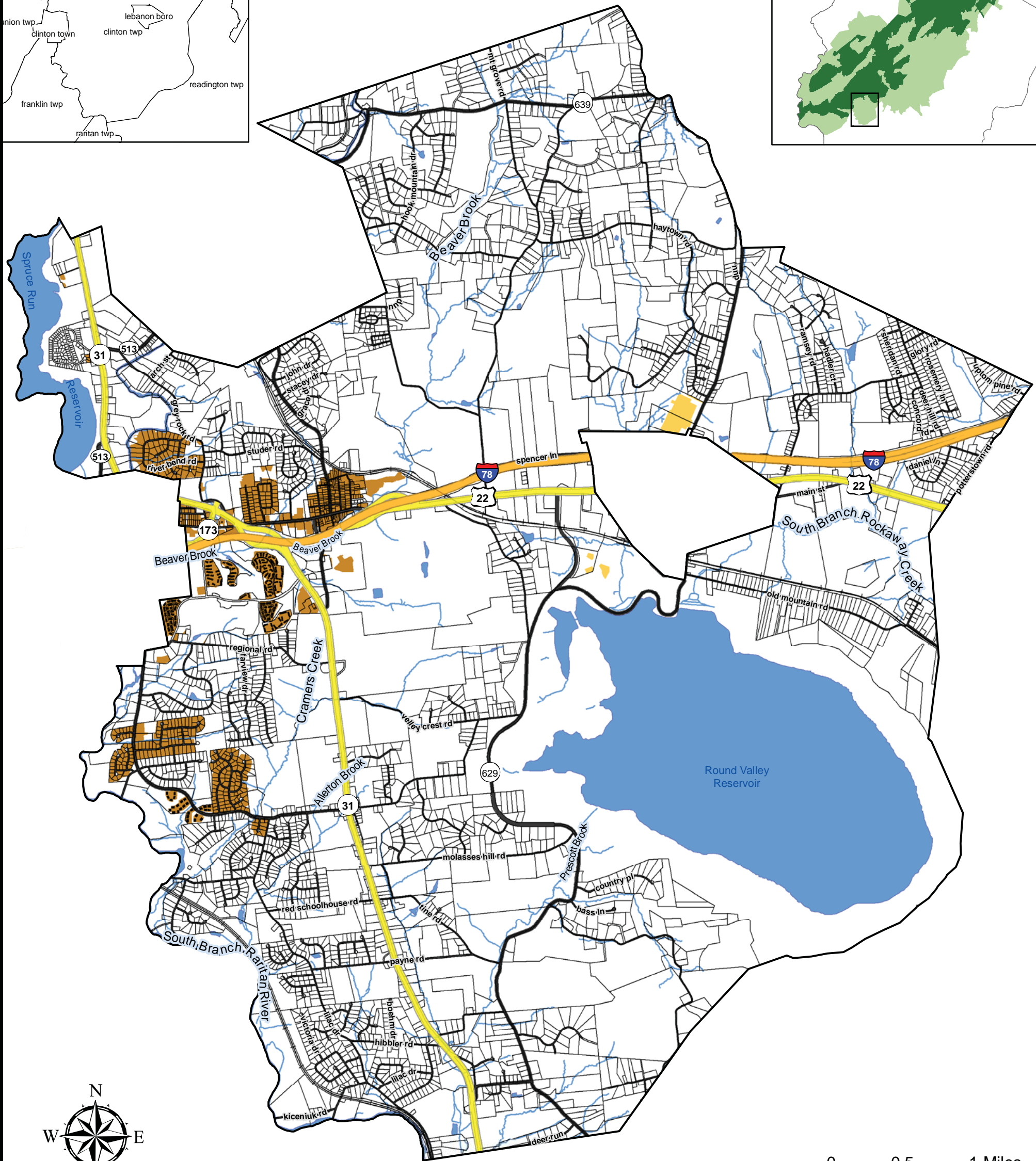
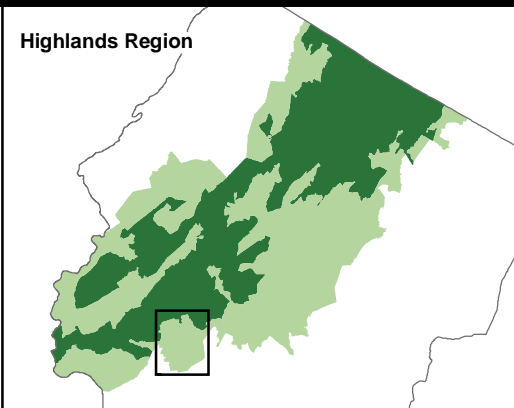
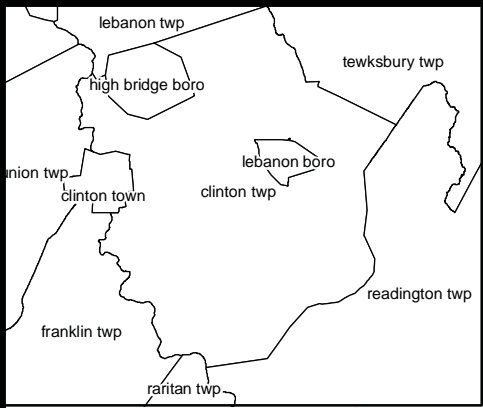
Highlands Regional Master Plan - Part 3. The Highlands Water Protection and Planning Act



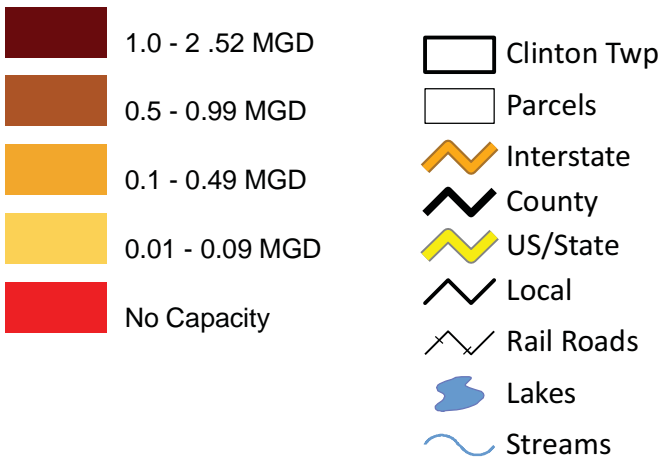
Upper Raritan Watershed Association
GIS Department
1-7-2008
Scale: 1:44,000

Source:
Highlands LUCM - 12/2007 Highlands Council
Streams - Highlands Council
Parcels - (2004) Hunterdon County
Roads, Rails Roads, Lakes
and Municipal Boundary - Downloads
from Hunterdon County 1/2/2007

Disclaimer: This information is provided with the understanding that it is not guaranteed to be correct or complete, and conclusions drawn from such information are the sole responsibility of the user.



Highlands Domestic Sewerage Facilities
Current Available Highlands Wastewater Capacity
in Million Gallons Per Day (MGD)



Clinton Township
Natural Resources Inventory
Land Use Capability
Domestic Sewerage Facilities Map
(Map 4 of 5)

A Highlands Domestic Sewerage Facility, which includes publicly-owned and investor-owned domestic wastewater treatment facilities, provides wastewater treatment to municipalities and has collection systems that can support redevelopment and regional growth opportunities. These facilities generally have NJDEP permitted discharge capacity of more than either 0.150 million gallons per day (MGD) for discharge to surface water or 0.075 MGD for discharge to ground water.

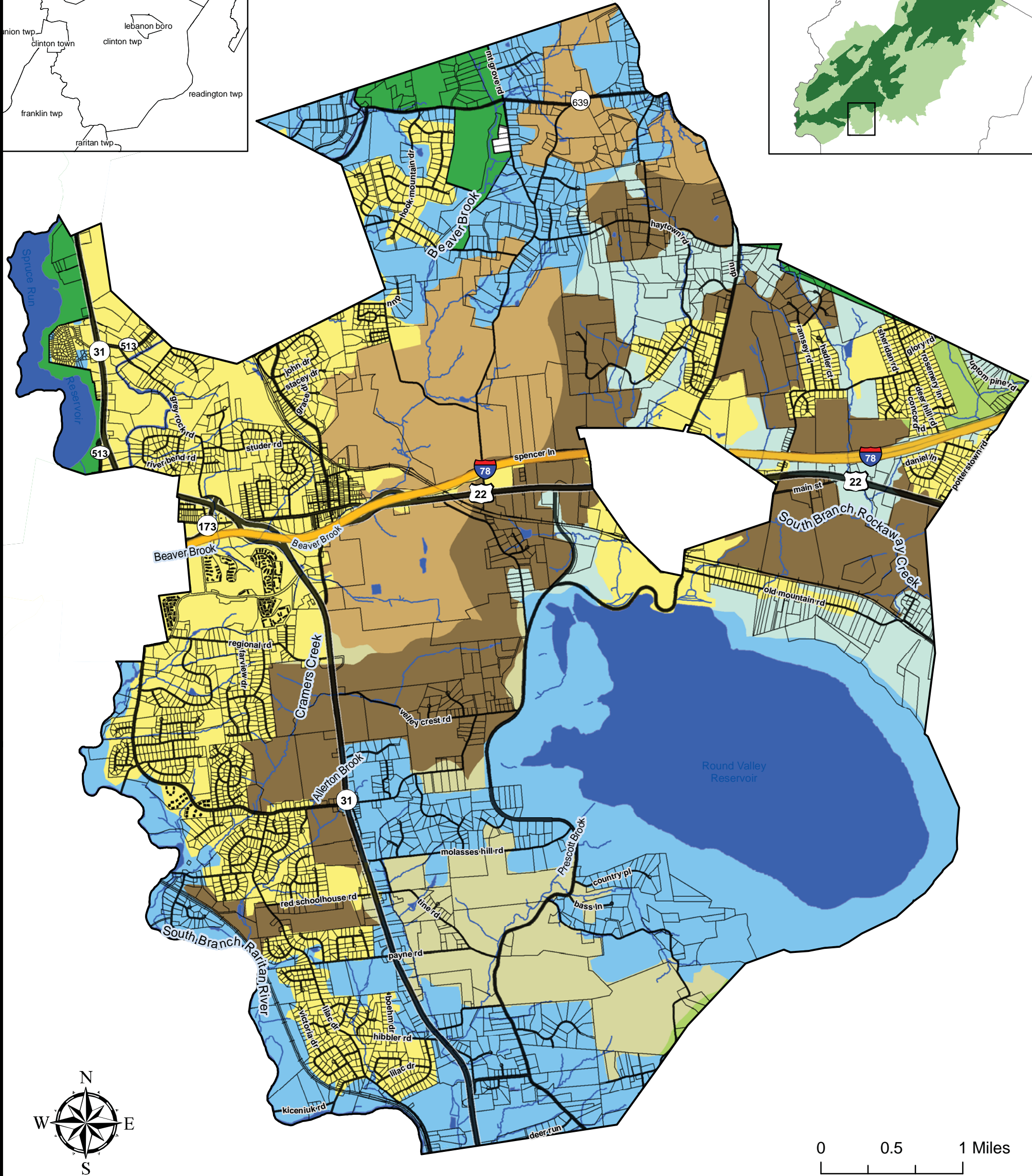
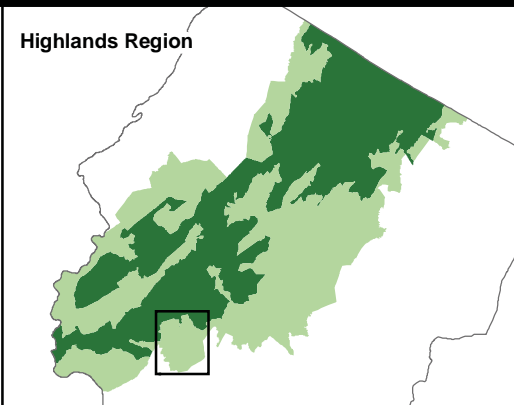
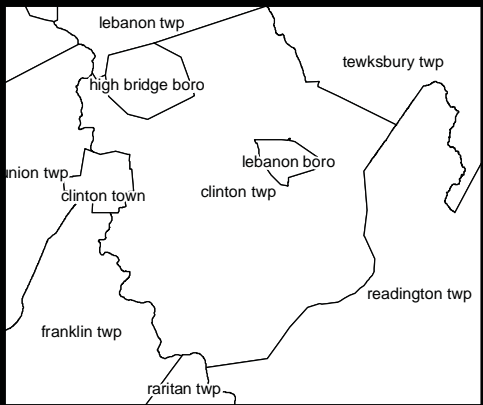
Highlands Regional Master Plan - Part 3. The Highlands Water Protection and Planning Act, Subpart e. Wastewater Utility (pg.52)



Upper Raritan Watershed Association
GIS Department
1-7-2008
Scale: 1:44,000

Source:
Highlands LUCM - 12/2007 Highlands Council
Streams - Highlands Council
Parcels - (2004) Hunterdon County
Roads, Rails Roads, Lakes
and Municipal Boundary - Downloads
from Hunterdon County 1/2/2007

Disclaimer: This information is provided with the understanding that it is not guaranteed to be correct or complete, and conclusions drawn from such information are the sole responsibility of the user.



Planning Area Zones
Septic System Yield by HUC 14

Conservation Zone	Protection Zone
0 - 10	0 - 10
11 - 34	11 - 34
35 - 77	35 - 77
78 - 132	78 - 132
133 - 297	133 - 297

Legend:

- Clinton Twp
- Parcels
- Rail Roads
- Lakes
- Streams
- Interstate
- County
- US/State
- Local
- Existing Community Zone
- Highlands Preservation Area



Clinton Township

Natural Resources Inventory
Land Use Capability
Septic System Yield Map

For Planning Area: Conservation and Protection Zones
(Map 5 of 5)

Septic system density is one of various factors used in determining the land use capability of areas in the Highlands Region.

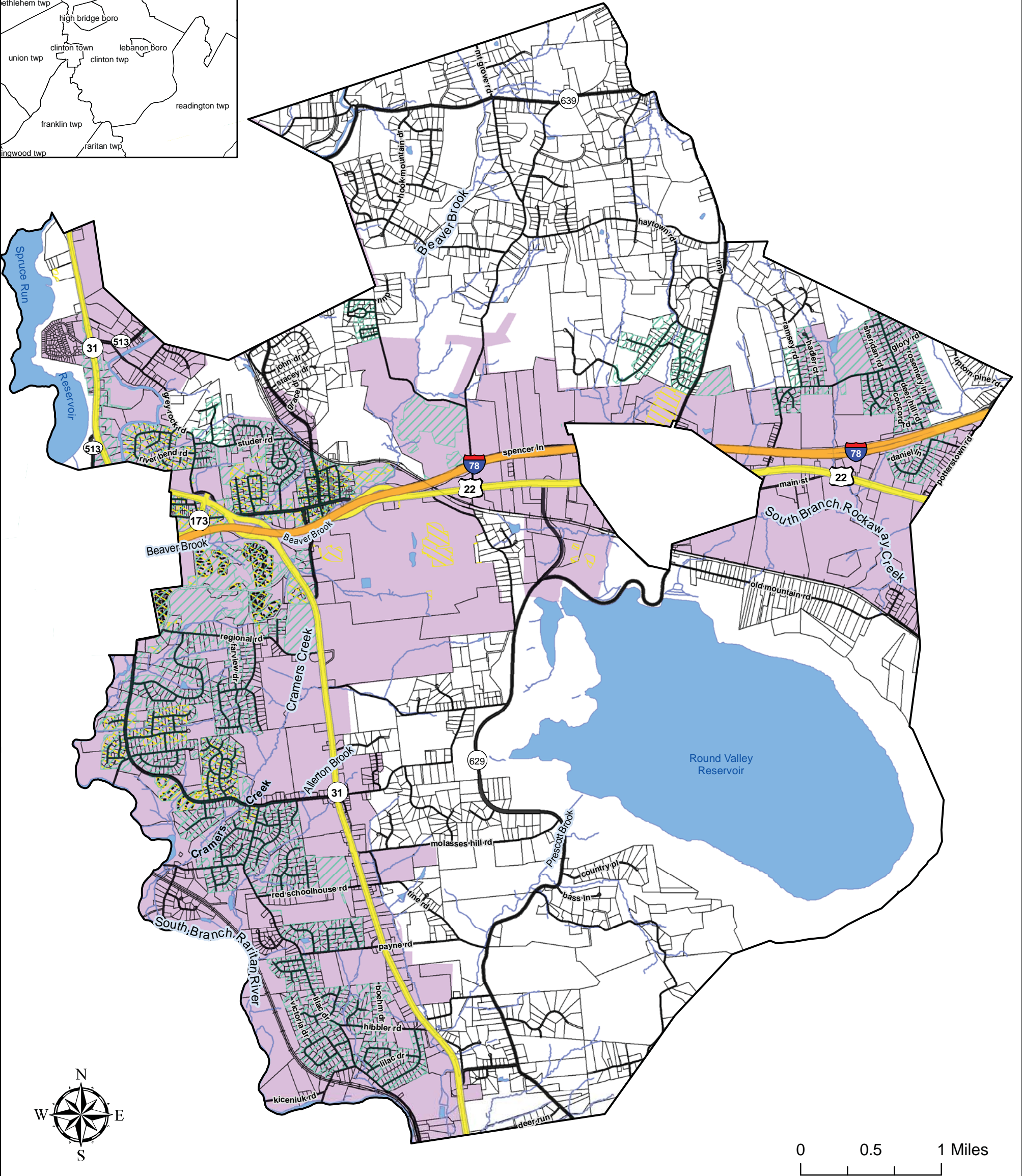
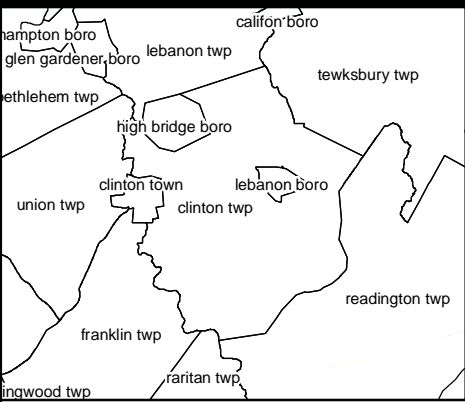
Highlands Regional Master Plan - Part 3. The Highlands Water Protection and Planning Act)
Highlands technical report - Septic System Densities for the Highlands Region (pg.39)



Upper Raritan Watershed Association
GIS Department
1-7-2008
Scale: 1:44,000

Source:
Highlands LUCM - 12/2007 Highlands Council
Streams - Highlands Council
Parcels - (2004) Hunterdon County
Roads, Rails Roads, Lakes
and Municipal Boundary - Downloads
from Hunterdon County 1/2/2007

Disclaimer: This information is provided with the understanding that it is not guaranteed to be correct or complete, and conclusions drawn from such information are the sole responsibility of the user.



Legend

- Clinton Twp
- Interstate
- County
- US/State
- Local
- Rail Roads
- Lakes
- Streams
- Potable Water Existing Area Served
- Sanitary Sewer Existing Area Served
- Parcels
- Sewer Service Area

The Draft Existing Areas Served with Potable Water represent those areas within the Highlands Region that are currently served by an existing permitted Public Community Water System (PCWS).

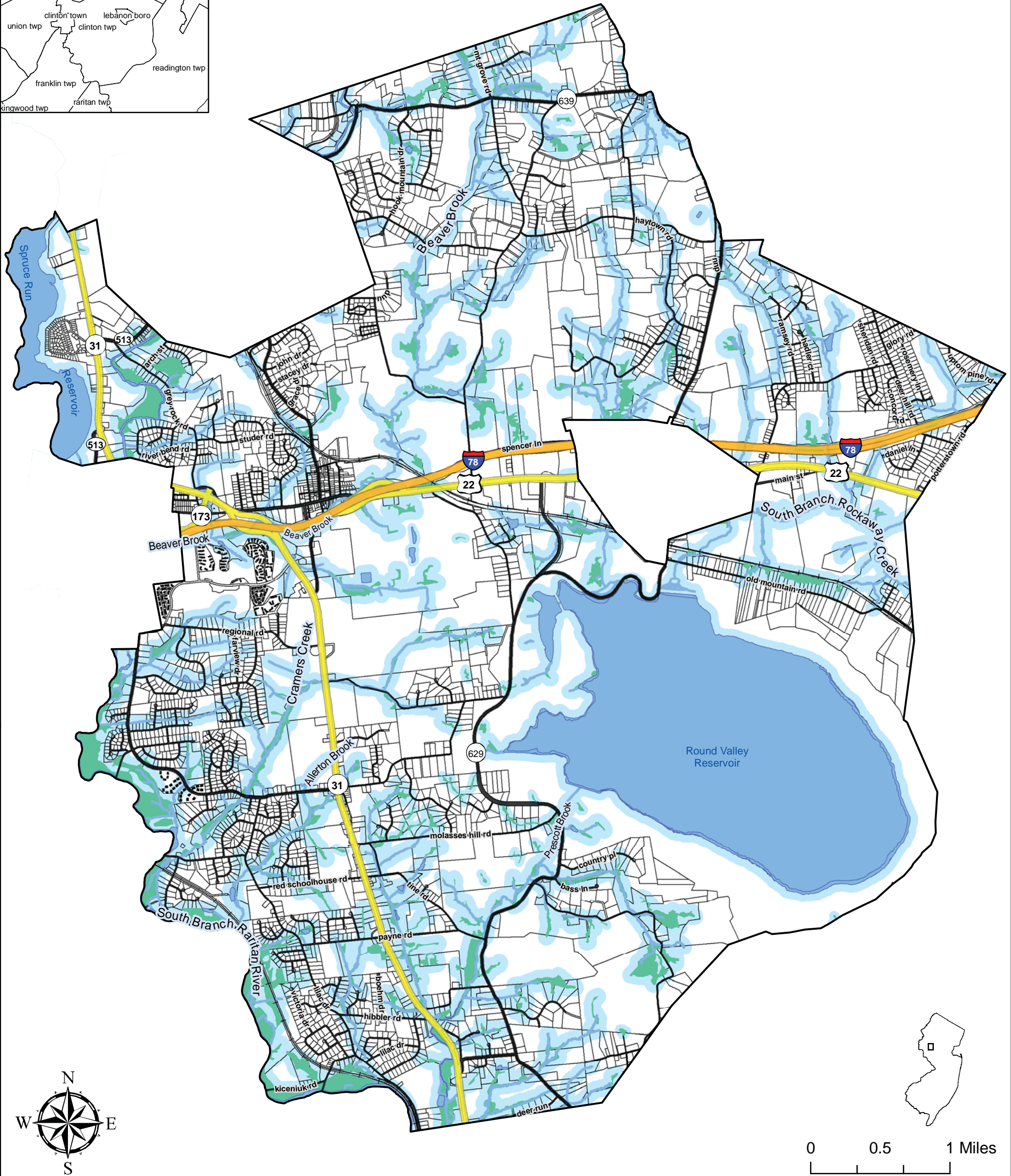
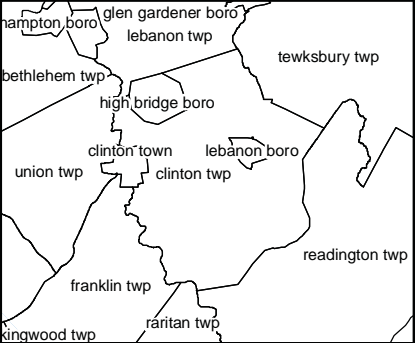
The Draft Sanitary Sewer Existing Areas Served with Waste Water represents those areas within the Highlands Region that are currently served by a NJPDES permitted Highlands Domestic Sewerage Facility (HDSF). Individual NJPDES permitted wastewater treatment facilities, such as private industrial and commercial facilities, schools, religious retreats, and certain recreation facilities were mapped as NJPDES permitted discharge points for purposes of assessing water capacity, but were not identified as HDSF's and were not included in the Existing Areas Served mapping in the Draft Regional Master Plan. The areas represented in this dataset only represent the specific area within each parcel that is served and not the entire extent of the served parcel.

Clinton Township
Natural Resources Inventory
Highlands
Existing Areas Served

Upper Raritan Watershed Association
GIS Department
11-20-2007
Scale: 1:44,000

Source:
Potable Water - Highlands Council (3/22/2007)
Sanitary Sewer - Highlands Council (3/22/2007)
State Sewer Service Area - NJDEP (2005)
Parcels - (2004) Hunterdon County
Roads, Rails Roads, Streams, Lakes
and Municipal Boundary - Downloads
from Hunterdon County 1/2/2007
Please note Highlands Data is still in draft

Disclaimer: This information is provided with the understanding that it is not guaranteed to be correct or complete, and conclusions drawn from such information are the sole responsibility of the user.



- Legend**
- Clinton Twp
 - Interstate
 - County
 - US/State
 - Local
 - Rail Roads
 - Highlands Water Bodies
 - Highlands Streams
 - Highlands Wetlands
 - Parcels
 - Open Waters Protection Area

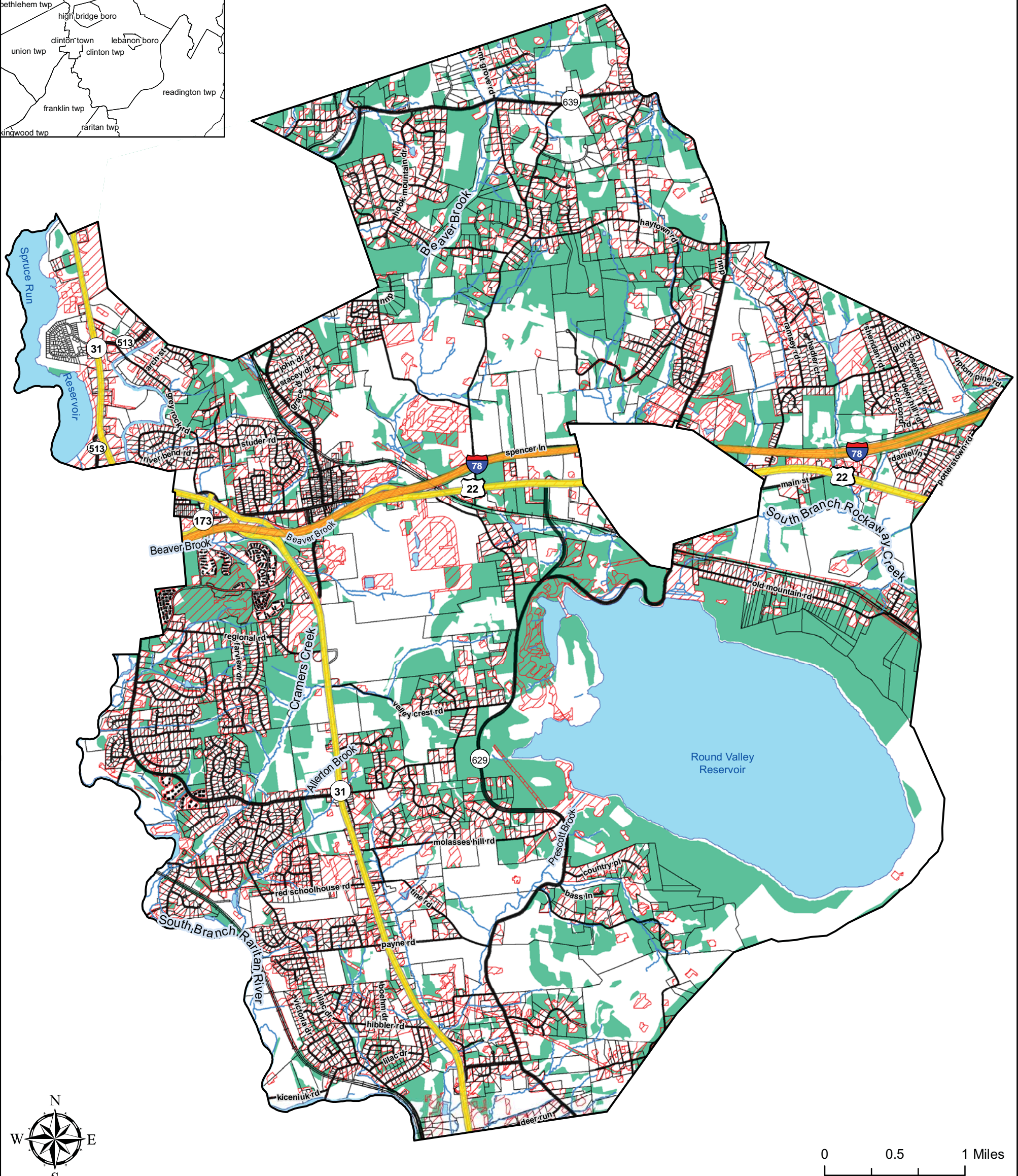
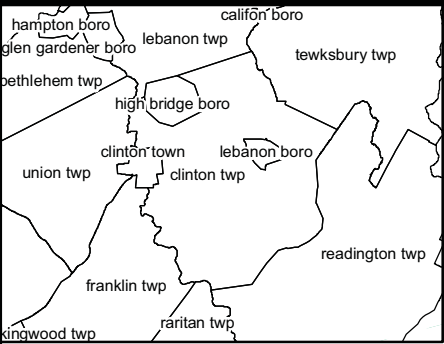
Clinton Township
Natural Resources Inventory
Highlands
Open Waters Protection Area
(Riparian Areas)

Highlands Open Waters include all springs, wetlands, intermittent or ephemeral streams, perennial streams, and bodies of surface water, whether natural or artificial, located wholly or partially within the boundaries of the Highlands Region. The protection area necessary to maintain the quality and ecological integrity of streams was evaluated. The Highlands Regional Master Plan includes a recommendation for a 300 foot protection area buffer around all streams and wetlands. -NJ Highlands Master Plan, Ecosystem Management Technical Report

Upper Raritan Watershed Association
GIS Department
11-20-2007
Scale: 1:44,000

Source:
Open Waters Protection Area - Highlands Council (2002)
Highlands Water Bodies - Highlands Council (2002)
Highlands Streams - Highlands Council (2006)
Highlands Wetlands - Highlands Council (2002)
Parcels - (2004) Hunterdon County
Roads, Rails Roads,
and Municipal Boundary - Downloads
from Hunterdon County 1/2/2007
Please note Highlands Data is still in draft

Disclaimer: This information is provided with the understanding that it is not guaranteed to be correct or complete, and conclusions drawn from such information are the sole responsibility of the user.



- Clinton Twp
- Interstate
- County
- US/State
- Local
- Rail Roads
- Lakes
- Streams
- Parcels
- Urban Land Use
- Prime Ground Water Recharge

Clinton Township

Natural Resources Inventory

Highlands

Prime Ground Water Recharge Area

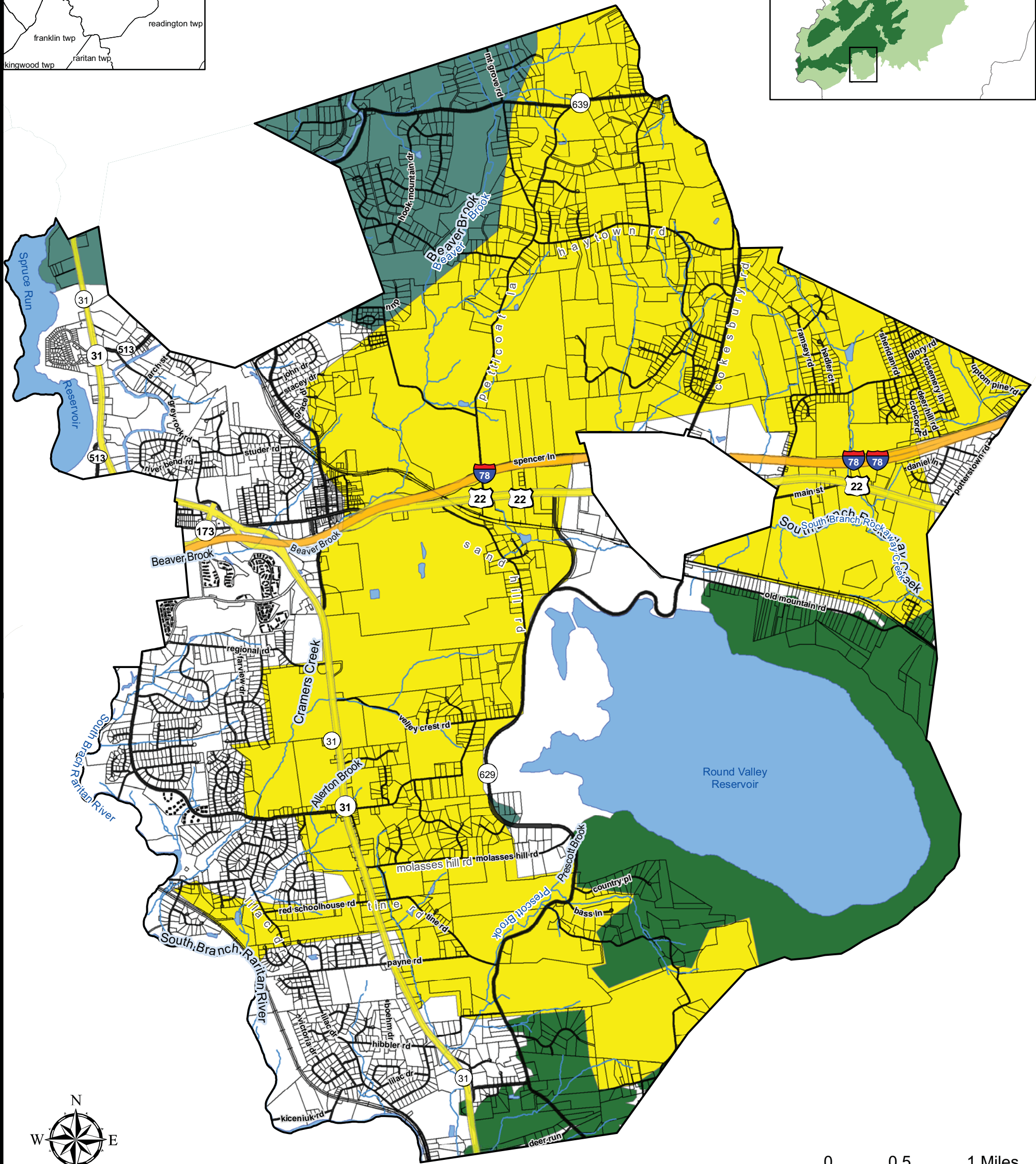
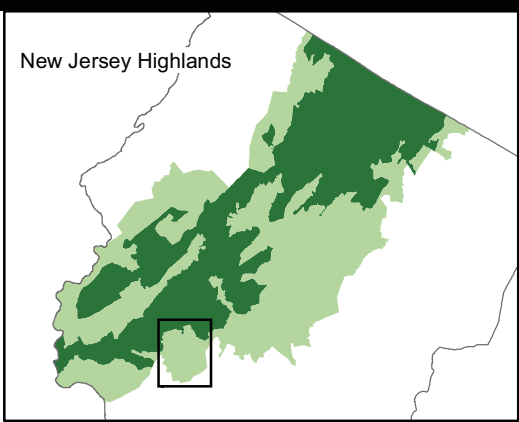
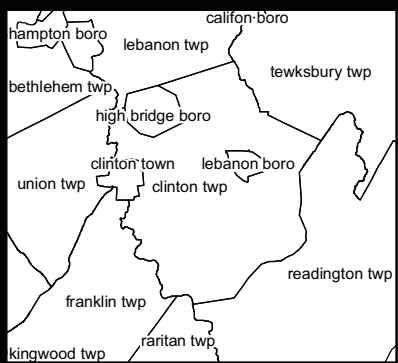


The Highlands Council has determined Draft Prime Ground Water Recharge areas based upon a method known as GSR-32, which was developed by the New Jersey Geological Survey to map ground water recharge areas. Prime Ground Water Recharge Areas are those areas that most efficiently provide 40 percent or more of the total recharge volume for each HUC14 subwatershed, using the GSR-32 with 2002 land use/land cover data.
(p. 14, Water Resources Technical Report, Volume II – Water Use and Availability)

Upper Raritan Watershed Association
GIS Department
12-12-2007
Scale: 1:44,000

Source:
Prime Ground Water Recharge Area -
Highlands Council (1/22/2007)
Parcels - (2004) Hunterdon County
Roads, Rails Roads, Streams, Lakes
and Municipal Boundary - Downloads
from Hunterdon County 1/2/2007
Urban Land Use - (2002) LULC NJ DEP
Please note Highlands Data is still in draft

Disclaimer: This information is provided with the understanding that it is not guaranteed to be correct or complete, and conclusions drawn from such information are the sole responsibility of the user.



Legend

- Clinton Twp
- Interstate
- County
- US/State
- Local
- Rail Roads
- Streams
- Lakes
- Parcels
- Agricultural Resource Area
- Critical Habitat Resource Area
- Forest Resource Area

Clinton Township

Natural Resources Inventory

Highlands Resource Areas

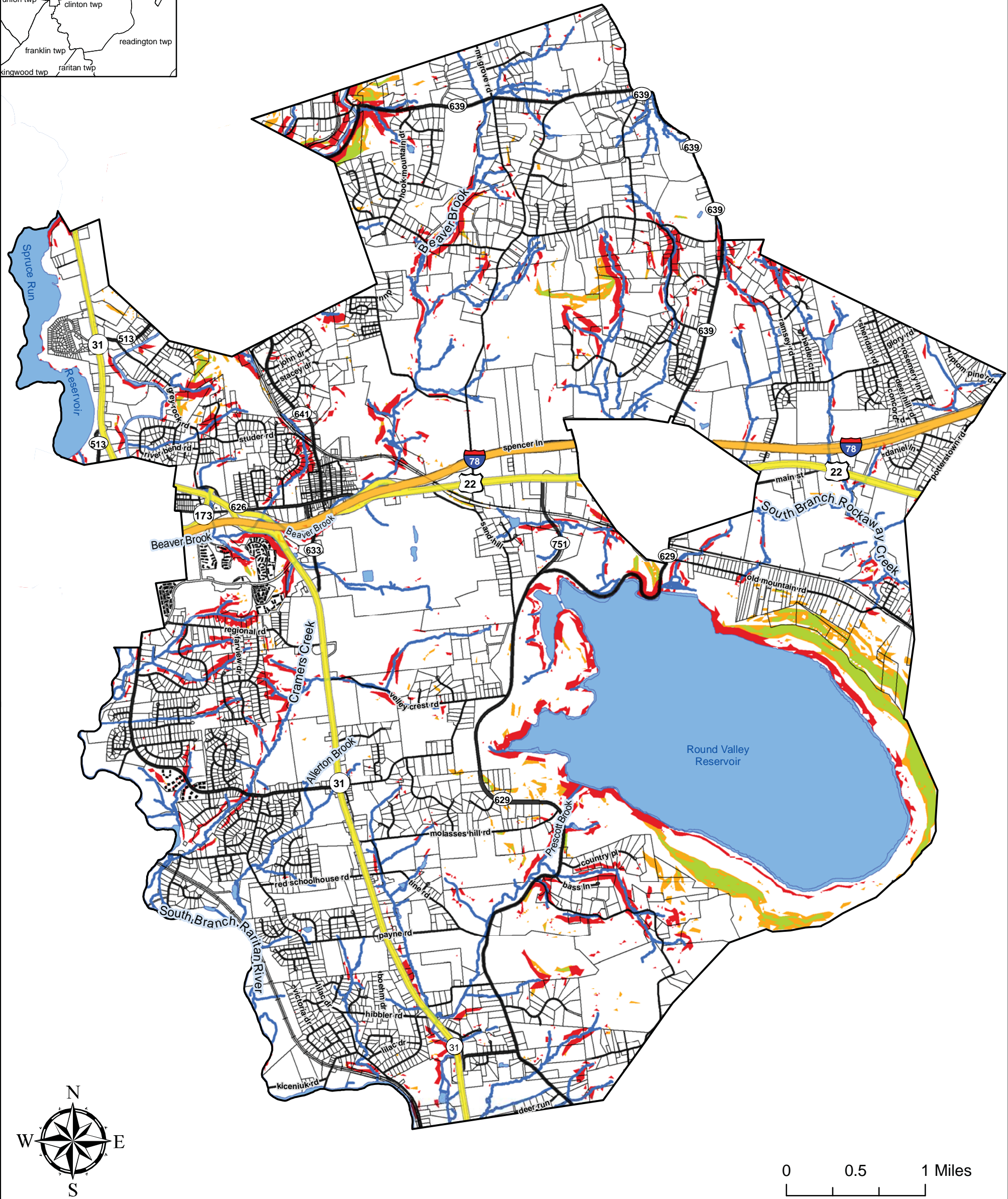
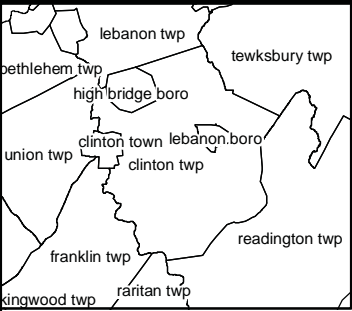


The Agricultural Resource Area was developed to delineate an integrated coverage of regional agricultural lands within the NJ Highlands Region. A technical basis and detailed background analyses of the Agricultural Resource Area can be found in the Highlands Council's Sustainable Agriculture Technical Report (NJ Highlands, January 2007).

Upper Raritan Watershed Association
GIS Department
7/12/2007
Scale: 1:50,000

Source:
Agricultural Resource Area - NJ Highlands Council (1/22/2007)
Critical Habitat Resource Area - NJ Highlands Council (1/24/2007)
Forest Resource Area - NJ Highlands Council (1/22/2007)
Parcels - (2004) Hunterdon County
Roads, Rails Roads, Streams, Lakes and Municipal Boundary - Downloads from Hunterdon County 1/2/2007
Please note Highlands Data is still in draft

Disclaimer: This information is provided with the understanding that it is not guaranteed to be correct or complete, and conclusions drawn from such information are the sole responsibility of the user.



Legend

- Clinton Twp
- Interstate
- County
- US/State
- Local
- Rail Roads
- Water Bodies
- Streams
- Parcels
- Slope> 10% Within Riparian Corridor
- Slope> 20% Undeveloped
- Slope> 15% Undeveloped

Clinton Township Natural Resources Inventory Highlands Slopes

The Highlands Council spatially examined slopes in the Highlands Region using the 10-meter Digital Elevation Grids generated from the United States Geological Survey's (USGS) Digital Elevation Model. The Council examined areas of slope in the Highlands Region that encompassed a minimum of 5,000 square feet and that exhibited one of the following grade classifications:

- . undeveloped lands with grades of slopes of 20% or greater;
- . undeveloped lands with grades of slope between 15% and 20%; and
- . all grades of slope between 10% and 15% that occur within the Riparian Area.

Upper Raritan Watershed Association
GIS Department
7/12/2007
Scale: 1:50,000

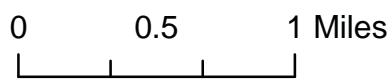
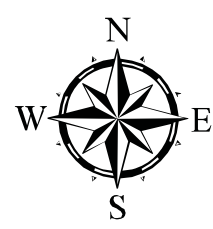
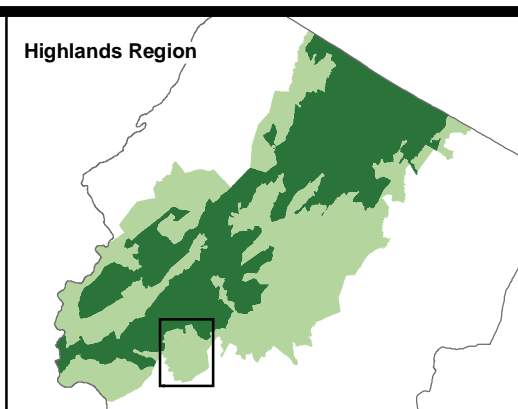


Source:

- Slope > 10% Within Riparian Corridors - (1999) Highlands Council
- Slope > 20% Undeveloped - (1999) Highlands Council
- Slope > 15% Undeveloped - (1999) Highlands Council
- Highlands Water Bodies - Highlands Council (2002)
- Highlands Streams - Highlands Council (2006)
- Highlands Wetlands - Highlands Council (2002)
- Parcels - (2004) Hunterdon County
- Roads, Rails Roads, and Municipal Boundary - Downloads from Hunterdon County 1/2/2007

Please note Highlands Data is still in draft

Disclaimer: This information is provided with the understanding that it is not guaranteed to be correct or complete, and conclusions drawn from such information are the sole responsibility of the user.



Clinton Township

Natural Resources Inventory



Land Use Capability

Zone Map

(Map 1 of 5)

The Highlands Final Draft Land Use Capability Zone Map utilizes overlay zones to address the requirements of the Highlands Water Protection and Planning Act (Highlands Act) and to provide regional guidance for the implementation of the policies in the Regional Master Plan.

Highlands Regional Master Plan, Chapter I, Part 3.
Highlands technical report (Pg. 94 - Land Use Capability Zone Map Development)

Upper Raritan Watershed Association
 GIS Department
 1-7-2008
 Scale: 1:44,000
 Source:
 Highlands Zone (LUCM) 12/2007 Highlands Council
 Streams - Highlands Council
 Parcels - (2004) Hunterdon County
 Roads, Rails Roads, Lakes
 and Municipal Boundary - Downloads
 from Hunterdon County 1/2/2007

Disclaimer: This information is provided with the understanding that it is not guaranteed to be correct or complete, and conclusions drawn from such information are the sole